



Gatterhütte, 1739 m

Fane Alm
Unica valle in un'angusta Alpe dove si bevono le acque minerali. Fane Alm è un'area di alta montagna con un'atmosfera unica. È un luogo ideale per chi ama la natura e il silenzio.

Info: www.gatterhuette.it

Anaratterhütte, 1850 m

Spigser Alm
Un luogo ideale per escursionisti e appassionati di MTB. Con un piccolo zoo e un parco giochi, è un luogo ideale per chi ama la natura e il silenzio.

Info: www.anaratterhuette.it

Pranter Stadel Hütte, 1850 m

Spigser Alm
Un luogo ideale per chi ama la natura e il silenzio. È un luogo ideale per chi ama la natura e il silenzio.

Info: www.pranterstadelhuette.it

Schutzhaus/Rifugio Wieserhütte, 1850 m

Spigser Alm
Un luogo ideale per chi ama la natura e il silenzio. È un luogo ideale per chi ama la natura e il silenzio.

Info: www.schutzhaus-wieserhuette.com

gitsch

La montagna chiama!

Info: www.gitschhuette.com

NESSSEL

HOTEL RIFUGIO
Dinck beim Ausstieg der Bergstation am Gitschberg auf 2107 m.

Info: www.nesssel.com

Hotel Schönblick

Im Gönnerberhof in Meransen

Info: www.goennerberhof.com

Panoramakarte Carta Panoramica

1:35.000

Info: www.gitschberg-jochtal.com

Gitschberg Jochtal | Rio Pusteria

Almhüttenrundweg Gitschberg

Giro delle balte del Gitschberg
Alpine pasture circular hiking tour Gitschberg

10.930 m | 704 m | 703 m | 4 h 30 min

Bergstation Jochtal Bahn, Ochenalm, Stoaner Mandl, Jochl Boden, Anaratterhütte, Linderalm, Bergstation Jochtal Bahn | Stazione a monte della cabinovia Jochtal, Malga Ochenalm, Stoaner Mandl, Jochl Boden, rifugio Anaratterhütte, malga Linderalm, stazione a monte della cabinovia Jochtal | Mountain station railway cable car Jochtal - Ochenalm hut - peak "Stoaner Mandl" - Jochl Boden - Anaratterhütte hut - Linderalm hut - Mountain station railway cable car Jochtal

Panoramarundweg Stoaner Mandl

Giro panoramico "Stoaner Mandl"
Panoramic circular hiking tour "Stoaner Mandl"

7.843 m | 430 m | 430 m | 2 h 30 min

Bergstation Jochtal Bahn, Ochenalm, Stoaner Mandl, Jochl Boden, Anaratterhütte, Linderalm, Bergstation Jochtal Bahn | Stazione a monte della cabinovia Jochtal, Malga Ochenalm, Stoaner Mandl, Jochl Boden, rifugio Anaratterhütte, malga Linderalm, stazione a monte della cabinovia Jochtal | Mountain station railway cable car Jochtal - Ochenalm hut - peak "Stoaner Mandl" - Jochl Boden - Anaratterhütte hut - Linderalm hut - Mountain station railway cable car Jochtal

Almhüttenrundweg Pfunders

Giro delle balte a Fundres
Alpine pasture circular hiking tour Pfunders/Funders

11.451 m | 611 m | 611 m | 4 h 30 min

Parkplatz Dun, Hütte Bodental, Hütte Gampelalm, Egger Höfe, aller Weg Richtung Dun, Parkplatz Dun | Parcheggio Dun, malga Bodental, malga Gampelalm, malga Dun - peak "Stoaner Mandl" - Jochl Boden - Anaratterhütte hut - Linderalm hut - Mountain station railway cable car Jochtal

Panoramarundweg Valler Jöchl

Giro panoramico Valler Jöchl
Panoramic circular hiking tour "Valler Jöchl"

7.391 m | 359 m | 358 m | 2 h 20 min

Bergstation Jochtal Bahn, Valler Jöchl, Hütte Nockalm, Anaratterhütte, Hütte Linderalm, Bergstation Jochtal Bahn | Stazione a monte cabinovia Jochtal, giogo Valler Jöchl, rifugio Nockalm, rifugio Anaratterhütte, malga Linderalm, stazione a monte

Höfweg Pfunders

Sentiero dei masi a Fundres
Farm hiking trail Pfunders/Funders

6.987 m | 263 m | 263 m | 2 h 5 min

Bergstation Jochtal Bahn, Valler Jöchl, Hütte Nockalm, Anaratterhütte, Hütte Linderalm, Bergstation Jochtal Bahn | Stazione a monte cabinovia Jochtal, giogo Valler Jöchl, rifugio Nockalm, rifugio Anaratterhütte, malga Linderalm, stazione a monte

Rundweg Spinges

Circular hiking tour at Spinges/Spinga

3.901 m | 231 m | 235 m | 1 h 25 min

Parkplatz Alfalfass, Großbretter, Pranter Stadlhütte oder Wieserhütte, Parkplatz Alfalfass | Parcheggio Valle Alfalfass, rifugio Großbretter, rifugio Pranter Stadel o rifugio Wieser, parcheggio Valle Alfalfass | Parcheggio Alfalfass Valle Alfalfass, malga Großbretterhütte, malga Pranter Stadlhütte o hut Wieserhütte, parking lot Alfalfass Valle Alfalfass

Rotenstein Höhenweg Vals

Alavia Rotenstein di Valles
High altitude hiking trail Rotenstein Vals/Valles

10.841 m | 673 m | 679 m | 3 h 30 min

Bergstation Jochtal Bahn, Rotenstein Alm, Prachen Jöch, Fanealm, Milchsteig, Parkplatz Talstation Vals | Stazione a monte cabinovia Jochtal, malga Rotenstein, sella

Eifenweg Vintl

Passeggiata degli elfi Vandoies
Elf trail Vintl Vandoies

3.500 m | 50 m | 50 m | 50 min - 1 h

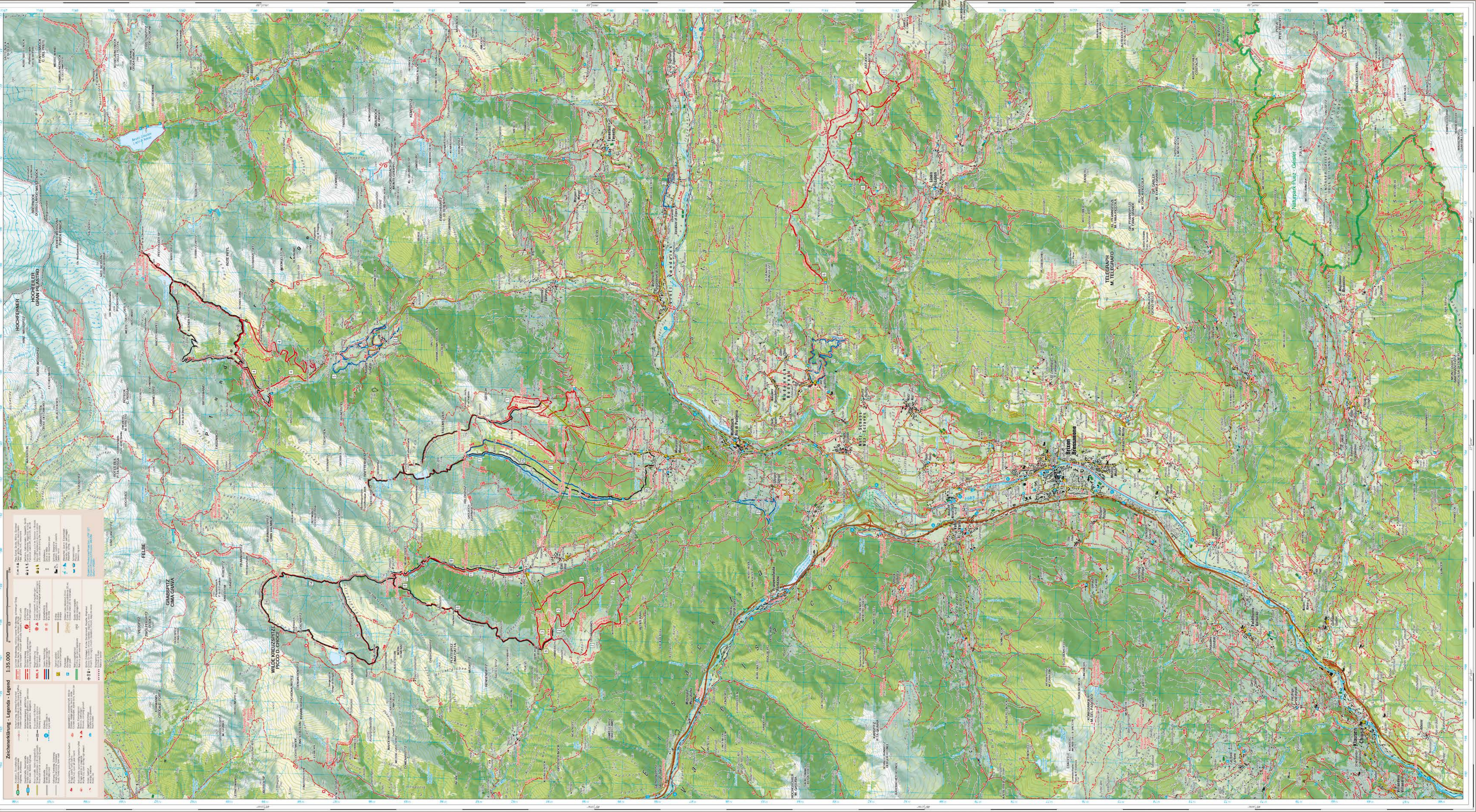
Bergstation Jochtal Bahn, Valler Jöchl, Hütte Nockalm, Anaratterhütte, Hütte Linderalm, Bergstation Jochtal Bahn | Stazione a monte cabinovia Jochtal, giogo Valler Jöchl, rifugio Nockalm, rifugio Anaratterhütte, malga Linderalm, stazione a monte

Notruf/Emergenza 112

Info: www.gitschberg-jochtal.com

Legende - Legenda

	Tourismusbüro		Ufficio turismo
	Parkplatz		Parcheggio
	Restaurant/Jausenstation		Ristorante/punto di ristoro
	Berg/Schloß		Residenza/castello
	Seilbahn		Funivia
	Kabinenbahn		Cabinovia
	Markierungsnummer		Numero segnavia
	Spazienweg		Passaggio
	Wanderweg		Escursionismo
	Bergtour		Escursione alpina
	Autobahn		Autostrada
	Hauptstraße		Strada provinciale
	Nebenstraße		Strada secondaria
	Bahnlinie/Bahnhof		Ferrovie/stazione



Zeichenerklärung - Legenda - Legend 1:35,000

	Road
	Railway
	River
	Stream
	Contour line
	Spot height
	Elevation point
	Boundary
	Forest
	Water body
	Building
	Church
	School
	Hospital
	Public building
	Industrial area
	Airport
	Railway station
	Bus stop
	Parking area
	Power line
	Telephone line
	Cable car
	Ski lift
	Ski area
	Ski resort
	Ski school
	Ski rental
	Ski equipment
	Ski instructor
	Ski lift operator
	Ski lift attendant
	Ski lift ticket office
	Ski lift queue
	Ski lift cabin
	Ski lift station
	Ski lift terminal
	Ski lift parking
	Ski lift entrance
	Ski lift exit
	Ski lift exit queue
	Ski lift exit terminal
	Ski lift exit parking
	Ski lift exit entrance
	Ski lift exit queue
	Ski lift exit terminal
	Ski lift exit parking
	Ski lift exit entrance